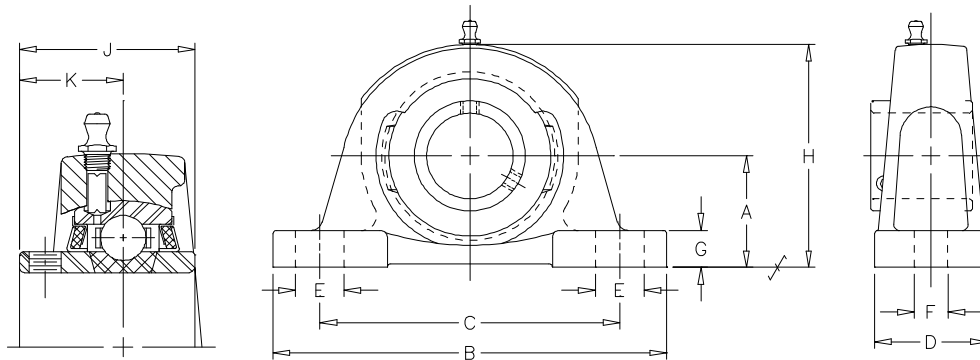


## Pillow Block Bearings

SealMaster now offers our LO-DRAG insert in a pillow block housed unit. The bearing comes with a low drag felt seal and 10% grease fill. Operating from 30° F to 200° F, the SealMaster LO-DRAG Bearings provide free running rotation while working to retain grease and maintain top-notch low drag sealing.



| Shaft Size | Description | A       | B      | C Min   | C Max  | D     | E     | F     | G     | H       | J       | K      |
|------------|-------------|---------|--------|---------|--------|-------|-------|-------|-------|---------|---------|--------|
| 1/2"       | NP-8 LAC    | 1 3/16  | 5      | 3 3/8   | 4 1/8  | 1 1/2 | 3/4   | 7/16  | 1/2   | 2 7/16  | 1 7/32  | 23/32  |
| 5/8"       | NP-10 LAC   | 1 3/16  | 5      | 3 3/8   | 4 1/8  | 1 1/2 | 3/4   | 7/16  | 1/2   | 2 7/16  | 1 7/32  | 23/32  |
| 3/4"       | NP-12 LAC   | 1 5/16  | 5      | 3 3/8   | 4 1/8  | 1 1/2 | 3/4   | 7/16  | 1/2   | 2 9/16  | 1 7/32  | 23/32  |
| 7/8"       | NP-14 LAC   | 1 7/16  | 5 1/2  | 3 7/8   | 4 3/8  | 1 1/2 | 5/8   | 7/16  | 1/2   | 2 13/16 | 1 3/8   | 13/16  |
| 15/16"     | NP-15 LAC   | 1 7/16  | 5 1/2  | 3 7/8   | 4 3/8  | 1 1/2 | 5/8   | 7/16  | 1/2   | 2 13/16 | 1 3/8   | 13/16  |
| 1"         | NP-16 LAC   | 1 7/16  | 5 1/2  | 3 7/8   | 4 3/8  | 1 1/2 | 5/8   | 7/16  | 1/2   | 2 13/16 | 1 3/8   | 13/16  |
| 1 1/8"     | NP-18 LAC   | 1 11/16 | 6 1/2  | 4 7/16  | 5 1/16 | 1 7/8 | 13/16 | 9/16  | 9/16  | 3 3/8   | 1 1/2   | 7/8    |
| 1 3/16"    | NP-19 LAC   | 1 11/16 | 6 1/2  | 4 7/16  | 5 1/16 | 1 7/8 | 13/16 | 9/16  | 9/16  | 3 3/8   | 1 1/2   | 7/8    |
| 1 1/4R"    | NP-20R LAC  | 1 11/16 | 6 1/2  | 4 7/16  | 5 1/16 | 1 7/8 | 13/16 | 9/16  | 9/16  | 3 3/8   | 1 1/2   | 7/8    |
| 1 1/4"     | NP-20 LAC   | 1 7/8   | 6 9/16 | 4 11/16 | 5 5/16 | 1 7/8 | 13/16 | 9/16  | 5/8   | 3 3/4   | 1 11/16 | 1      |
| 1 3/8"     | NP-22 LAC   | 1 7/8   | 6 9/16 | 4 11/16 | 5 5/16 | 1 7/8 | 13/16 | 9/16  | 5/8   | 3 3/4   | 1 11/16 | 1      |
| 1 7/16"    | NP-23 LAC   | 1 7/8   | 6 9/16 | 4 11/16 | 5 5/16 | 1 7/8 | 13/16 | 9/16  | 5/8   | 3 3/4   | 1 11/16 | 1      |
| 1 1/2"     | NP-24 LAC   | 1 15/16 | 7 1/4  | 4 7/8   | 5 7/8  | 2 1/8 | 1     | 9/16  | 11/16 | 3 15/16 | 1 15/16 | 1 3/16 |
| 1 9/16"    | NP-25 LAC   | 1 15/16 | 7 1/4  | 4 7/8   | 5 7/8  | 2 1/8 | 1     | 9/16  | 11/16 | 3 15/16 | 1 15/16 | 1 3/16 |
| 1 3/4"     | NP-28 LAC   | 2 1/8   | 7 1/2  | 5 7/16  | 6 1/16 | 2 1/8 | 13/16 | 9/16  | 11/16 | 4 1/4   | 1 15/16 | 1 3/16 |
| 1 15/16"   | NP-31 LAC   | 2 1/4   | 8 1/8  | 6       | 6 1/2  | 2 3/8 | 7/8   | 11/16 | 3/4   | 4 9/16  | 2 1/32  | 1 9/32 |
| 2"         | NP-32 LAC   | 2 1/2   | 8 5/8  | 6 1/2   | 7      | 2 3/8 | 7/8   | 11/16 | 3/4   | 5       | 2 3/16  | 1 5/16 |
| 2 3/16"    | NP-35 LAC   | 2 1/2   | 8 5/8  | 6 1/2   | 7      | 2 3/8 | 7/8   | 11/16 | 3/4   | 5       | 2 3/16  | 1 5/16 |
| 2 3/8"     | NP-38 LAC   | 2 3/4   | 9 1/2  | 6 7/8   | 7 5/8  | 2 3/4 | 1     | 11/16 | 7/8   | 5 9/16  | 2 9/16  | 1 9/16 |
| 2 7/16"    | NP-39 LAC   | 2 3/4   | 9 1/2  | 6 7/8   | 7 5/8  | 2 3/4 | 1     | 11/16 | 7/8   | 5 9/16  | 2 9/16  | 1 9/16 |



The advanced LO DRAG felt labyrinth seal with rotating flinger is designed to direct contamination away from the sealing surface and reduce rotational torque. Unlike most low drag seal designs, the LO DRAG felt seal provides an excellent barrier which works to retain grease and act as a filter to reduce the ingress of debris.